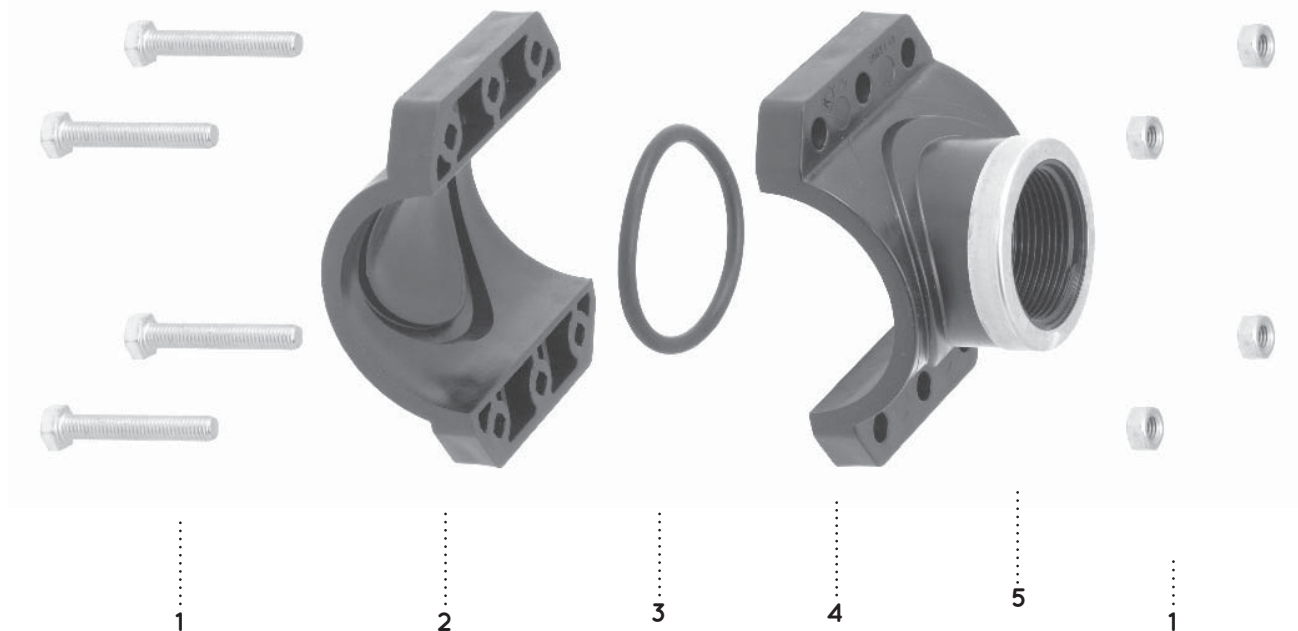


**Collarin de toma PN10**

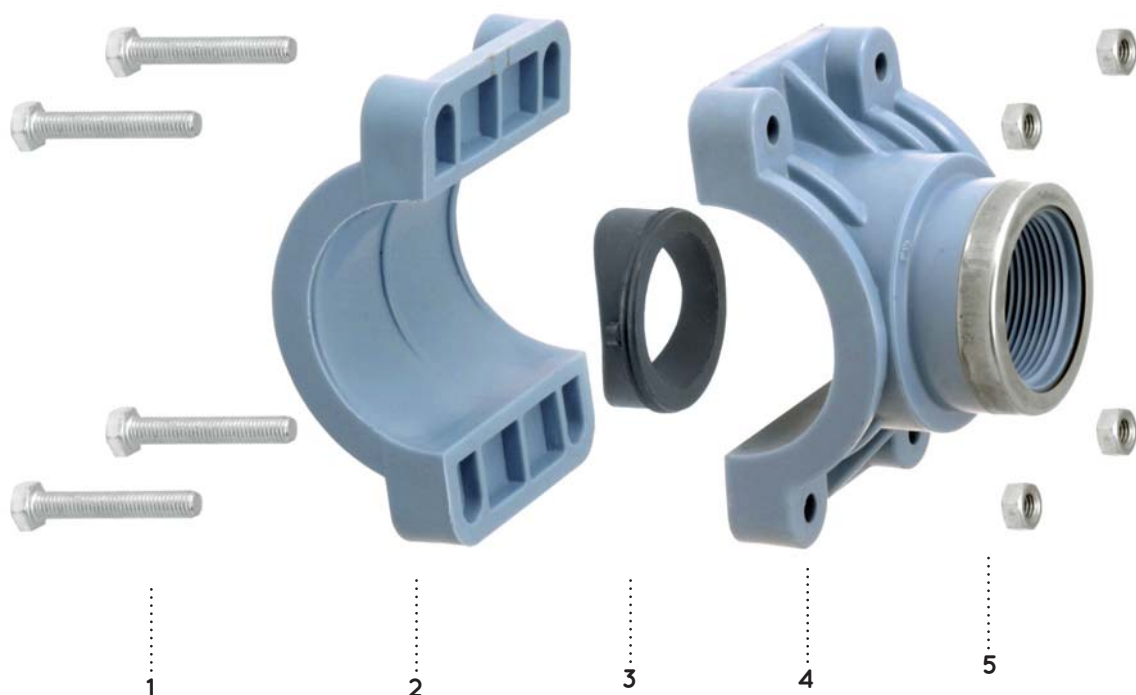
1. Tornillos: Acero galvanizado
2. Abrazadera base: Polipropileno (PP-B) con alto grado de estabilidad con protección anti UV.
3. Junta tórica: Goma nitrílica (NBR).
4. Abrazadera con derivación: Polipropileno (PP-B) con alto grado de estabilidad con protección anti UV.
5. Anillo de refuerzo: Acero Inox

Collarín de toma en PP-B
PN10

**Collarin de toma PN16**

1. Tornillos: Acero galvanizado
2. Abrazadera base: Polipropileno (PP-B) con alto grado de estabilidad con protección anti UV.
3. Junta tórica: Goma nitrílica (NBR).
4. Abrazadera con derivación: Polipropileno (PP-B) con alto grado de estabilidad con protección anti UV.
5. Anillo de refuerzo: Acero Inox

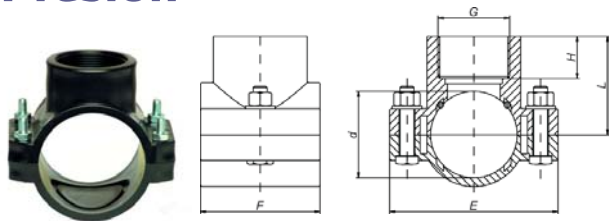
Collarín de toma en PP-B
reforzado en PN16
*Bajo Pedido



Disponibilidad: ● Stock, □ 5-6 días, *Consultar

TARIFA PVP A-Presión

Accesorios de Compresión
PE y Collarines

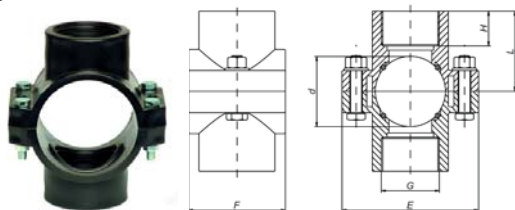


COLLARÍN DE TOMA

Fig. 1019

Diámetros (mm/in)	Dimensiones (mm)						PN	ud/caja	Código
	L (mm)	H (mm)	E (mm)	F (mm)	n (mm)	n1(mm)			
● 25 x 1/2"	38	20	76	49	2	M6X30	10	180	2 16 20 025
● 25 x 3/4"	38	21	76	49	2	M6X30		180	2 16 20 026
● 32 x 1/2"	41	17	81	56	2	M8X40		140	2 16 20 032
● 32 x 3/4"	41	21	81	56	2	M8X40		140	2 16 20 033
● 32 x 1"	44	23	81	56	2	M8X40		140	2 16 20 034
● 40 x 1/2"	41	17	81	60	2	M8X40		110	2 16 20 040
● 40 x 3/4"	46	18	81	60	2	M8X40		110	2 16 20 041
● 40 x 1"	46	23	81	60	2	M8X40		110	2 16 20 042
● 50 x 1/2"	50	17	98	69	4	M8X40		80	2 16 20 050
● 50 x 3/4"	50	18	98	69	4	M8X40		80	2 16 20 051
● 50 x 1"	52	20	98	69	4	M8X40		80	2 16 20 052
● 50 x 1 1/4"	57	25	98	69	4	M8X40		80	2 16 20 053
● 63 x 1/2"	55	16	105	79	4	M8X40		55	2 16 20 063
● 63 x 3/4"	55	18	105	79	4	M8X40		55	2 16 20 064
● 63 x 1"	59	20	105	79	4	M8X40		55	2 16 20 065
● 63 x 1 1/4"	63	25	105	79	4	M8X40		55	2 16 20 066
● 63 x 1 1/2"	63	28	105	79	4	M8X40		55	2 16 20 067
● 75 x 1/2"	62	17	120	90	4	M8X40		40	2 16 20 075
● 75 x 3/4"	62	18	120	90	4	M8X40		40	2 16 20 076
● 75 x 1"	65	21	120	90	4	M8X40		40	2 16 20 077
● 75 x 1 1/4"	68	24	120	90	4	M8X40		40	2 16 20 078
● 75 x 1 1/2"	68	23	120	90	4	M8X40		40	2 16 20 079
● 75 x 2"	72	27	120	90	4	M8X40		40	2 16 20 080
● 90 x 1/2"	70	17	135	90	4	M8X50		30	2 16 20 090
● 90 x 3/4"	70	19	135	90	4	M8X50		30	2 16 20 091
● 90 x 1"	72	21	135	90	4	M8X50		30	2 16 20 092
● 90 x 1 1/4"	76	24	135	90	4	M8X50		30	2 16 20 093
● 90 x 1 1/2"	76	24	135	90	4	M8X50		30	2 16 20 094
● 90 x 2"	80	27	135	90	4	M8X50		30	2 16 20 095
● 110 x 1/2"	80	17	168	99	4	M8X50		19	2 16 20 110
● 110 x 3/4"	80	19	168	99	4	M8X50		19	2 16 20 111
● 110 x 1"	84	20	168	99	4	M8X50		19	2 16 20 112
● 110 x 1 1/4"	86	23	168	99	4	M8X50		19	2 16 20 113
● 110 x 1 1/2"	86	23	168	99	4	M8X50	19	2 16 20 114	
● 110 x 2"	90	27	168	99	4	M8X50	19	2 16 20 115	
● 125 x 1/2"	108	25	190	106	6	M8X60	12	2 16 20 125	
● 125 x 3/4"	108	26	190	106	6	M8X60	12	2 16 20 126	
● 125 x 1"	109	26	190	106	6	M8X60	12	2 16 20 127	
● 125 x 1 1/4"	109	25	190	106	6	M8X60	12	2 16 20 128	
● 125 x 1 1/2"	113	28	190	106	6	M8X60	12	2 16 20 129	
● 125 x 2"	113	30	190	106	6	M8X60	12	2 16 20 130	
● 160 x 3/4"	108	19	215	175	6	M8X60	13	2 16 20 161	
● 160 x 1"	110	21	215	175	6	M8X60	13	2 16 20 162	
● 160 x 1 1/4"	113	24	215	175	6	M8X60	13	2 16 20 163	
● 160 x 1 1/2"	115	26	215	175	6	M8X60	13	2 16 20 164	
● 160 x 2"	117	30	215	175	6	M8X60	13	2 16 20 165	
□ 160 x 2 1/2"	125	32	215	175	6	M8X60	10	2 16 20 166	
● 160 x 3"	134	35	215	175	6	M8X60	9	2 16 20 167	
□ 160 x 4"	135	40	215	175	6	M8X60	9	2 16 20 168	
□ 200 x 3/4"	128	23	262	175	6	M10X100	11	2 16 20 201	
● 200 x 1"	130	23	262	175	6	M10X100	11	2 16 20 202	
● 200 x 1 1/4"	133	23	262	175	6	M10X100	11	2 16 20 203	
● 200 x 1 1/2"	133	23	262	175	6	M10X100	11	2 16 20 204	
● 200 x 2"	135	30	262	175	6	M10X100	11	2 16 20 205	
□ 200 x 2 1/2"	150	32	262	175	6	M10X100	11	2 16 20 206	
● 200 x 3"	152	35	262	175	6	M10X100	9	2 16 20 207	
□ 200 x 4"	155	42	262	175	6	M10X100	8	2 16 20 208	

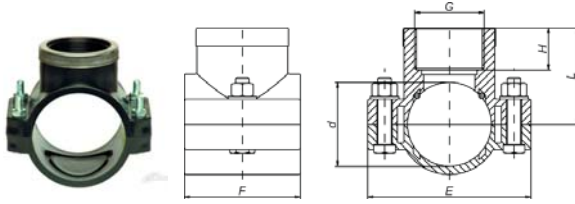
Disponibilidad: ● Stock, □ 5-6 días, *Consultar


DOBLE COLLARÍN DE TOMA
 PN10 -Fig.1020

Diámetros (mm/in)	Dimensiones (mm)						ud/caja	Código
	L (mm)	H (mm)	E (mm)	F (mm)	n (mm)	n1(mm)		
* 25 x 1/2"	38	20	76	49	2	M6X30	180	2 16 22 026
* 25 x 3/4"	38	21	76	49	2	M6X30	180	2 16 22 032
* 32 x 1/2"	41	17	81	56	2	M8X40	140	2 16 22 033
* 32 x 3/4"	41	21	81	56	2	M8X40	140	2 16 22 034
* 32 x 1"	44	23	81	56	2	M8X40	140	2 16 22 040
* 40 x 1/2"	41	17	81	60	2	M8X40	110	2 16 22 041
* 40 x 3/4"	46	18	81	60	2	M8X40	110	2 16 22 042
* 40 x 1"	46	23	81	60	2	M8X40	110	2 16 22 043
* 50 x 1/2"	50	17	98	69	4	M8X40	80	2 16 22 050
* 50 x 3/4"	50	18	98	69	4	M8X40	80	2 16 22 051
* 50 x 1"	52	20	98	69	4	M8X40	80	2 16 22 052
* 50 x 1 1/4"	57	25	98	69	4	M8X40	80	2 16 22 053
* 63 x 1/2"	55	16	105	79	4	M8X40	55	2 16 22 063
* 63 x 3/4"	55	18	105	79	4	M8X40	55	2 16 22 064
* 63 x 1"	59	20	105	79	4	M8X40	55	2 16 22 065
* 63 x 1 1/4"	63	25	105	79	4	M8X40	55	2 16 22 066
* 63 x 1 1/2"	63	28	105	79	4	M8X40	55	2 16 22 067
* 75 x 1/2"	62	17	120	90	4	M8X50	40	2 16 22 075
* 75 x 3/4"	62	18	120	90	4	M8X50	40	2 16 22 076
* 75 x 1"	65	21	120	90	4	M8X50	40	2 16 22 077
* 75 x 1 1/4"	68	24	120	90	4	M8X50	40	2 16 22 078
* 75 x 1 1/2"	68	23	120	90	4	M8X50	40	2 16 22 079
* 75 x 2"	72	27	120	90	4	M8X50	40	2 16 22 080
* 90 x 1/2"	70	17	135	90	4	M8X50	30	2 16 22 090
* 90 x 3/4"	70	19	135	90	4	M8X50	30	2 16 22 091
* 90 x 1"	72	21	135	90	4	M8X50	30	2 16 22 092
* 90 x 1 1/4"	76	24	135	90	4	M8X50	30	2 16 22 093
* 90 x 1 1/2"	76	24	135	90	4	M8X50	30	2 16 22 094
* 90 x 2"	80	27	135	90	4	M8X50	30	2 16 22 095
* 110 x 1/2"	80	17	168	99	4	M8X50	19	2 16 22 110
* 110 x 3/4"	80	19	168	99	4	M8X50	19	2 16 22 111
* 110 x 1"	84	20	168	99	4	M8X50	19	2 16 22 112
* 110 x 1 1/4"	86	23	168	99	4	M8X50	19	2 16 22 113
* 110 x 1 1/2"	86	23	168	99	4	M8X50	19	2 16 22 114
* 110 x 2"	90	27	168	99	4	M8X50	19	2 16 22 115
* 125 x 1/2"	108	25	190	106	6	M8X60	12	2 16 22 125
* 125 x 3/4"	108	26	190	106	6	M8X60	12	2 16 22 126
* 125 x 1"	109	26	190	106	6	M8X60	12	2 16 22 127
* 125 x 1 1/4"	109	25	190	106	6	M8X60	12	2 16 22 128
* 125 x 1 1/2"	113	28	190	106	6	M8X60	12	2 16 22 129
* 125 x 2"	113	30	190	106	6	M8X60	12	2 16 22 130

TARIFA PVP A-Presión

Accesorios de Compresión
PE y Collarines

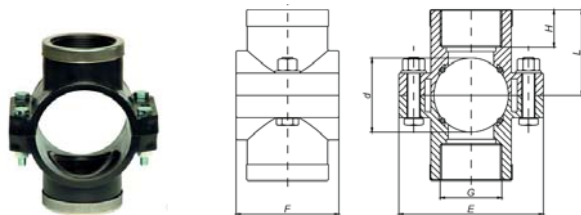


COLLARÍN DE TOMA CON ANILLO DE REFUERZO

Fig. 1026

Diámetros (mm/in)	Dimensiones (mm)						PN	ud/caja	Código
	L (mm)	H (mm)	E (mm)	F (mm)	n (mm)	n1(mm)			
□ 25 x 1/2"	38	20	76	49	2	M6X30	10	180	2 16 26 026
□ 25 x 3/4"	38	21	76	49	2	M6X30		180	2 16 26 032
□ 32 x 1/2"	41	17	81	56	2	M8X40		140	2 16 26 033
□ 32 x 3/4"	41	21	81	56	2	M8X40		140	2 16 26 034
□ 32 x 1"	44	23	81	56	2	M8X40		140	2 16 26 035
□ 40 x 1/2"	41	17	81	60	2	M8X40		110	2 16 26 040
□ 40 x 3/4"	46	18	81	60	2	M8X40		110	2 16 26 041
• 40 x 1"	46	23	81	60	2	M8X40		110	2 16 26 042
□ 50 x 1/2"	50	17	98	69	4	M8X40		80	2 16 26 050
□ 50 x 3/4"	50	18	98	69	4	M8X40		80	2 16 26 051
• 50 x 1"	52	20	98	69	4	M8X40		80	2 16 26 052
□ 50 x 1 1/4"	57	25	98	69	4	M8X40		80	2 16 26 053
□ 63 x 1/2"	55	16	105	79	4	M8X40		55	2 16 26 063
□ 63 x 3/4"	55	18	105	79	4	M8X40		55	2 16 26 064
• 63 x 1"	59	20	105	79	4	M8X40		55	2 16 26 065
□ 63 x 1 1/4"	63	25	105	79	4	M8X40		55	2 16 26 066
□ 63 x 1 1/2"	63	28	105	79	4	M8X40		55	2 16 26 067
□ 75 x 1/2"	62	17	120	90	4	M8X40		40	2 16 26 075
□ 75 x 3/4"	62	18	120	90	4	M8X40		40	2 16 26 076
• 75 x 1"	65	21	120	90	4	M8X40		40	2 16 26 077
□ 75 x 1 1/4"	68	24	120	90	4	M8X40		40	2 16 26 078
□ 75 x 1 1/2"	68	23	120	90	4	M8X40		40	2 16 26 079
□ 75 x 2"	72	27	120	90	4	M8X40		40	2 16 26 080
□ 90 x 1/2"	70	17	135	90	4	M8X50		30	2 16 26 090
□ 90 x 3/4"	70	19	135	90	4	M8X50		30	2 16 26 091
• 90 x 1"	72	21	135	90	4	M8X50		30	2 16 26 092
□ 90 x 1 1/4"	76	24	135	90	4	M8X50		30	2 16 26 093
□ 90 x 1 1/2"	76	24	135	90	4	M8X50		30	2 16 26 094
□ 90 x 2"	80	27	135	90	4	M8X50		30	2 16 26 095
□ 110 x 1/2"	80	17	168	99	4	M8X50		19	2 16 26 110
□ 110 x 3/4"	80	19	168	99	4	M8X50		19	2 16 26 111
• 110 x 1"	84	20	168	99	4	M8X50		19	2 16 26 112
□ 110 x 1 1/4"	86	23	168	99	4	M8X50		19	2 16 26 113
□ 110 x 1 1/2"	86	23	168	99	4	M8X50		19	2 16 26 114
□ 110 x 2"	90	27	168	99	4	M8X50		19	2 16 26 115
□ 125 x 1/2"	108	25	190	106	6	M8X60		12	2 16 26 125
□ 125 x 3/4"	108	26	190	106	6	M8X60		12	2 16 26 126
• 125 x 1"	109	26	190	106	6	M8X60		12	2 16 26 127
□ 125 x 1 1/4"	109	25	190	106	6	M8X60		12	2 16 26 128
□ 125 x 1 1/2"	113	28	190	106	6	M8X60		12	2 16 26 129
□ 125 x 2"	113	30	190	106	6	M8X60		12	2 16 26 130
□ 125 x 3"	125	40	190	106	6	M80X60		12	2 16 26 131
□ 160 x 3/4"	108	19	215	175	6	M8X60		13	2 16 26 161
□ 160 x 1"	110	21	215	175	6	M8X60		13	2 16 26 162
□ 160 x 1 1/4"	113	24	215	175	6	M8X60		13	2 16 26 163
□ 160 x 1 1/2"	115	26	215	175	6	M8X60	13	2 16 26 164	
□ 160 x 2"	117	30	215	175	6	M8X60	10	2 16 26 165	
□ 160 x 2 1/2"	125	32	215	175	6	M8X60	9	2 16 26 166	
□ 160 x 3"	134	35	215	175	6	M8X60	9	2 16 26 167	
□ 160 x 4"	135	40	215	175	6	M8X60	11	2 16 26 168	
□ 200 x 3/4"	128	23	262	175	6	M10X100	11	2 16 26 201	
□ 200 x 1"	130	23	262	175	6	M10X100	11	2 16 26 202	
□ 200 x 1 1/4"	133	23	262	175	6	M10X100	11	2 16 26 203	
□ 200 x 1 1/2"	133	23	262	175	6	M10X100	11	2 16 26 204	
□ 200 x 2"	135	30	262	175	6	M10X100	11	2 16 26 205	
□ 200 x 2 1/2"	150	32	262	175	6	M10X100	9	2 16 26 206	
□ 200 x 3"	152	35	262	175	6	M10X100	8	2 16 26 207	
□ 200 x 4"	155	42	262	175	6	M10X100		2 16 26 208	

Disponibilidad: ● Stock, □ 5-6 días, *Consultar


COLLARÍN DOBLE DE TOMA CON ANILLO DE REFUERZO
 PN10 -Fig. 1027

Diámetros (mm/in)	Dimensiones (mm)						ud/caja	Código
	L (mm)	H (mm)	E (mm)	F (mm)	n (mm)	n1(mm)		
* 25 x 1/2"	38	20	76	49	2	M6X30	180	2 16 28 026
* 25 x 3/4"	38	21	76	49	2	M6X30	180	2 16 28 032
* 32 x 1/2"	41	17	81	56	2	M8X40	140	2 16 28 033
* 32 x 3/4"	41	21	81	56	2	M8X40	140	2 16 28 034
* 32 x 1"	44	23	81	56	2	M8X40	140	2 16 28 040
* 40 x 1/2"	41	17	81	60	2	M8X40	110	2 16 28 041
* 40 x 3/4"	46	18	81	60	2	M8X40	110	2 16 28 042
* 40 x 1"	46	23	81	60	2	M8X40	110	2 16 28 043
* 50 x 1/2"	50	17	98	69	4	M8X40	80	2 16 28 050
* 50 x 3/4"	50	18	98	69	4	M8X40	80	2 16 28 051
* 50 x 1"	52	20	98	69	4	M8X40	80	2 16 28 052
* 50 x 1 1/4"	57	25	98	69	4	M8X40	80	2 16 28 053
* 63 x 1/2"	55	16	105	79	4	M8X40	55	2 16 28 063
* 63 x 3/4"	55	18	105	79	4	M8X40	55	2 16 28 064
* 63 x 1"	59	20	105	79	4	M8X40	55	2 16 28 065
* 63 x 1 1/4"	63	25	105	79	4	M8X40	55	2 16 28 066
* 63 x 1 1/2"	63	28	105	79	4	M8X40	55	2 16 28 067
* 75 x 1/2"	62	17	120	90	4	M8X50	40	2 16 28 075
* 75 x 3/4"	62	18	120	90	4	M8X50	40	2 16 28 076
* 75 x 1"	65	21	120	90	4	M8X50	40	2 16 28 077
* 75 x 1 1/4"	68	24	120	90	4	M8X50	40	2 16 28 078
* 75 x 1 1/2"	68	23	120	90	4	M8X50	40	2 16 28 079
* 75 x 2"	72	27	120	90	4	M8X50	40	2 16 28 080
* 90 x 1/2"	70	17	135	90	4	M8X50	30	2 16 28 090
* 90 x 3/4"	70	19	135	90	4	M8X50	30	2 16 28 091
* 90 x 1"	72	21	135	90	4	M8X50	30	2 16 28 092
* 90 x 1 1/4"	76	24	135	90	4	M8X50	30	2 16 28 093
* 90 x 1 1/2"	76	24	135	90	4	M8X50	30	2 16 28 094
* 90 x 2"	80	27	135	90	4	M8X50	30	2 16 28 095
* 110 x 1/2"	80	17	168	99	4	M8X50	19	2 16 28 110
* 110 x 3/4"	80	19	168	99	4	M8X50	19	2 16 28 111
* 110 x 1"	84	20	168	99	4	M8X50	19	2 16 28 112
* 110 x 1 1/4"	86	23	168	99	4	M8X50	19	2 16 28 113
* 110 x 1 1/2"	86	23	168	99	4	M8X50	19	2 16 28 114
* 110 x 2"	90	27	168	99	4	M8X50	19	2 16 28 115
* 125 x 1/2"	108	25	190	106	6	M8X60	12	2 16 28 125
* 125 x 3/4"	108	26	190	106	6	M8X60	12	2 16 28 126
* 125 x 1"	109	26	190	106	6	M8X60	12	2 16 28 127
* 125 x 1 1/4"	109	25	190	106	6	M8X60	12	2 16 28 128
* 125 x 1 1/2"	113	28	190	106	6	M8X60	12	2 16 28 129
* 125 x 2"	113	30	190	106	6	M8X60	12	2 16 28 130