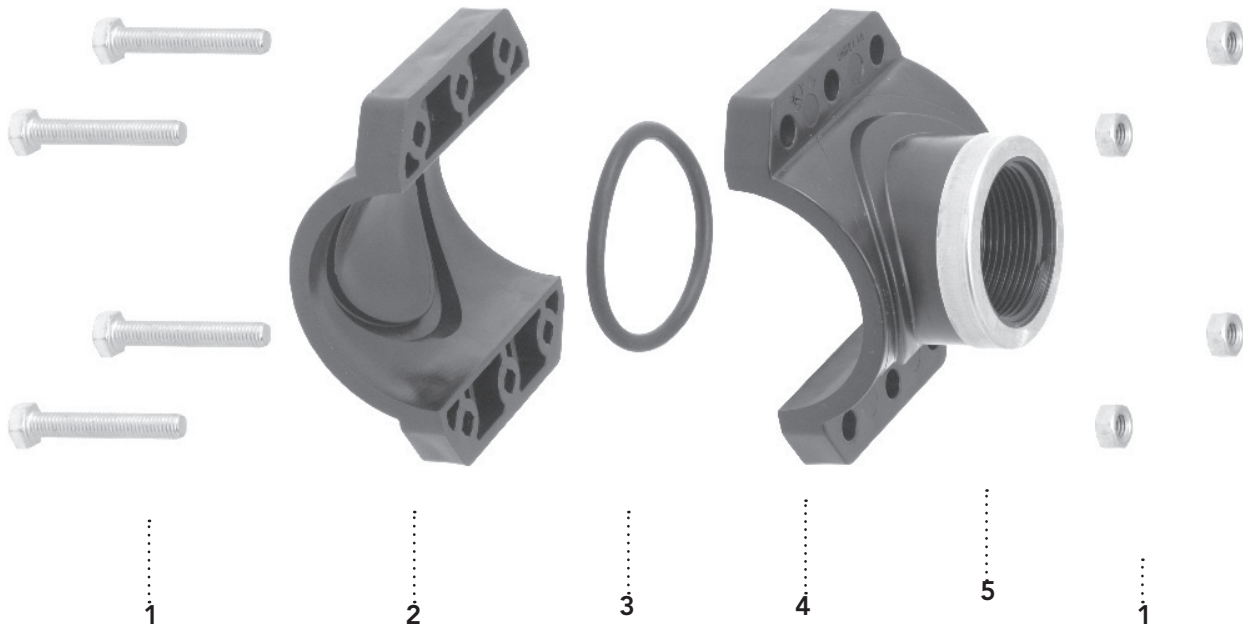




**Collarín de toma PN10**

1. Tornillos: Acero galvanizado
2. Abrazadera base: Polipropileno (PP-B) con alto grado de estabilidad con pretección anti UV.
3. Junta tórica: Goma nitrílica (NBR).
4. Abrazadera con derivación: Polipropileno (PP-B) con alto grado de estabilidad con protección anti UV.
5. Anillo de refuerzo: Acero Inox

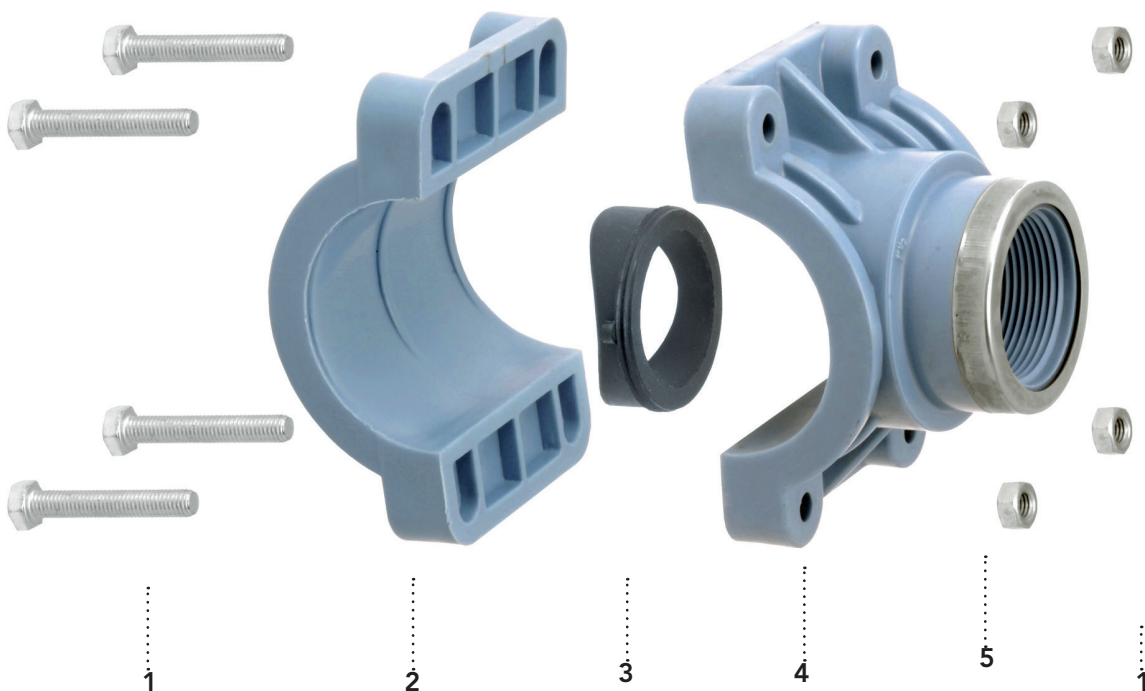
Collarín de toma en PP-B  
PN10

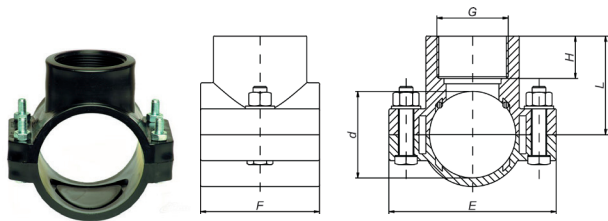


**Collarín de toma PN16**

1. Tornillos: Acero galvanizado
2. Abrazadera base: Polipropileno (PP-B) con alto grado de estabilidad con pretección anti UV.
3. Junta tórica: Goma nitrílica (NBR).
4. Abrazadera con derivación: Polipropileno (PP-B) con alto grado de estabilidad con protección anti UV.
5. Anillo de refuerzo: Acero Inox

Collarín de toma en PP-B  
reforzado en PN16  
\*Bajo Pedido

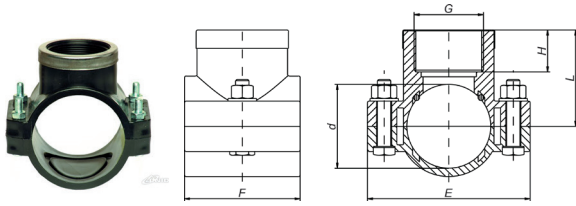




COLLARÍN DE TOMA

Fig. 1019

Diámetros (mm/in)	Dimensiones (mm)						PN	ud/caja	Código	
	L (mm)	H (mm)	E (mm)	F (mm)	n (mm)	n1(mm)				
25 x 1/2"	38	20	76	49	2	M6X30	10	180	2 16 20 025	
25 x 3/4"	38	21	76	49	2	M6X30		180	2 16 20 026	
32 x 1/2"	41	17	81	56	2	M8X40		140	2 16 20 032	
32 x 3/4"	41	21	81	56	2	M8X40		140	2 16 20 033	
32 x 1"	44	23	81	56	2	M8X40		140	2 16 20 034	
40 x 1/2"	41	17	81	60	2	M8X40		110	2 16 20 040	
40 x 3/4"	46	18	81	60	2	M8X40		110	2 16 20 041	
40 x 1"	46	23	81	60	2	M8X40		110	2 16 20 042	
50 x 1/2"	50	17	98	69	4	M8X40		80	2 16 20 050	
50 x 3/4"	50	18	98	69	4	M8X40		80	2 16 20 051	
50 x 1"	52	20	98	69	4	M8X40		80	2 16 20 052	
50 x 1 1/4"	57	25	98	69	4	M8X40		80	2 16 20 053	
63 x 1/2"	55	16	105	79	4	M8X40		55	2 16 20 063	
63 x 3/4"	55	18	105	79	4	M8X40		55	2 16 20 064	
63 x 1"	59	20	105	79	4	M8X40		55	2 16 20 065	
63 x 1 1/4"	63	25	105	79	4	M8X40		55	2 16 20 066	
63 x 1 1/2"	63	28	105	79	4	M8X40		55	2 16 20 067	
75 x 1/2"	62	17	120	90	4	M8X40		40	2 16 20 075	
75 x 3/4"	62	18	120	90	4	M8X40		40	2 16 20 076	
75 x 1"	65	21	120	90	4	M8X40		40	2 16 20 077	
75 x 1 1/4"	68	24	120	90	4	M8X40		40	2 16 20 078	
75 x 1 1/2"	68	23	120	90	4	M8X40		40	2 16 20 079	
75 x 2"	72	27	120	90	4	M8X40		40	2 16 20 080	
90 x 1/2"	70	17	135	90	4	M8X50		30	2 16 20 090	
90 x 3/4"	70	19	135	90	4	M8X50		30	2 16 20 091	
90 x 1"	72	21	135	90	4	M8X50		30	2 16 20 092	
90 x 1 1/4"	76	24	135	90	4	M8X50		30	2 16 20 093	
90 x 1 1/2"	76	24	135	90	4	M8X50		30	2 16 20 094	
90 x 2"	80	27	135	90	4	M8X50		30	2 16 20 095	
110 x 1/2"	80	17	168	99	4	M8X50		19	2 16 20 110	
110 x 3/4"	80	19	168	99	4	M8X50		19	2 16 20 111	
110 x 1"	84	20	168	99	4	M8X50		19	2 16 20 112	
110 x 1 1/4"	86	23	168	99	4	M8X50		19	2 16 20 113	
110 x 1 1/2"	86	23	168	99	4	M8X50		19	2 16 20 114	
110 x 2"	90	27	168	99	4	M8X50		19	2 16 20 115	
125 x 1/2"	108	25	190	106	6	M8X60		12	2 16 20 125	
125 x 3/4"	108	26	190	106	6	M8X60		12	2 16 20 126	
125 x 1"	109	26	190	106	6	M8X60		12	2 16 20 127	
125 x 1 1/4"	109	25	190	106	6	M8X60		12	2 16 20 128	
125 x 1 1/2"	113	28	190	106	6	M8X60		12	2 16 20 129	
125 x 2"	113	30	190	106	6	M8X60		12	2 16 20 130	
160 x 3/4"	108	19	215	175	6	M8X60		6	13	2 16 20 161
160 x 1"	110	21	215	175	6	M8X60			13	2 16 20 162
160 x 1 1/4"	113	24	215	175	6	M8X60			13	2 16 20 163
160 x 1 1/2"	115	26	215	175	6	M8X60	13		2 16 20 164	
160 x 2"	117	30	215	175	6	M8X60	13		2 16 20 165	
160 x 2 1/2"	125	32	215	175	6	M8X60	10		2 16 20 166	
160 x 3"	134	35	215	175	6	M8X60	9		2 16 20 167	
160 x 4"	135	40	215	175	6	M8X60	9		2 16 20 168	
200 x 3/4"	128	23	262	175	6	M10X100	11		2 16 20 201	
200 x 1"	130	23	262	175	6	M10X100	11		2 16 20 202	
200 x 1 1/4"	133	23	262	175	6	M10X100	11		2 16 20 203	
200 x 1 1/2"	133	23	262	175	6	M10X100	11		2 16 20 204	
200 x 2"	135	30	262	175	6	M10X100	11		2 16 20 205	
200 x 2 1/2"	150	32	262	175	6	M10X100	11		2 16 20 206	
200 x 3"	152	35	262	175	6	M10X100	9		2 16 20 207	
200 x 4"	155	42	262	175	6	M10X100	8		2 16 20 208	



COLLARÍN DE TOMA CON ANILLO DE REFUERZO

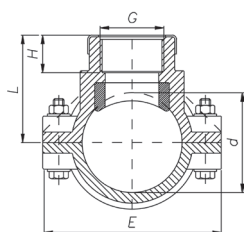
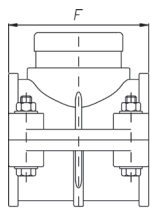
Fig. 1026

Diámetros (mm/in)	Dimensiones (mm)						PN	ud/caja	Código
	L (mm)	H (mm)	E (mm)	F (mm)	n (mm)	n1(mm)			
25 x 1/2"	38	20	76	49	2	M6X30	10	180	2 16 26 026
25 x 3/4"	38	21	76	49	2	M6X30		180	2 16 26 032
32 x 1/2"	41	17	81	56	2	M8X40		140	2 16 26 033
32 x 3/4"	41	21	81	56	2	M8X40		140	2 16 26 034
32 x 1"	44	23	81	56	2	M8X40		140	2 16 26 035
40 x 1/2"	41	17	81	60	2	M8X40		110	2 16 26 040
40 x 3/4"	46	18	81	60	2	M8X40		110	2 16 26 041
40 x 1"	46	23	81	60	2	M8X40		110	2 16 26 042
50 x 1/2"	50	17	98	69	4	M8X40		80	2 16 26 050
50 x 3/4"	50	18	98	69	4	M8X40		80	2 16 26 051
50 x 1"	52	20	98	69	4	M8X40		80	2 16 26 052
50 x 1 1/4"	57	25	98	69	4	M8X40		80	2 16 26 053
63 x 1/2"	55	16	105	79	4	M8X40		55	2 16 26 063
63 x 3/4"	55	18	105	79	4	M8X40		55	2 16 26 064
63 x 1"	59	20	105	79	4	M8X40		55	2 16 26 065
63 x 1 1/4"	63	25	105	79	4	M8X40		55	2 16 26 066
63 x 1 1/2"	63	28	105	79	4	M8X40		55	2 16 26 067
75 x 1/2"	62	17	120	90	4	M8X40		40	2 16 26 075
75 x 3/4"	62	18	120	90	4	M8X40		40	2 16 26 076
75 x 1"	65	21	120	90	4	M8X40		40	2 16 26 077
75 x 1 1/4"	68	24	120	90	4	M8X40		40	2 16 26 078
75 x 1 1/2"	68	23	120	90	4	M8X40		40	2 16 26 079
75 x 2"	72	27	120	90	4	M8X40		40	2 16 26 080
90 x 1/2"	70	17	135	90	4	M8X50		30	2 16 26 090
90 x 3/4"	70	19	135	90	4	M8X50		30	2 16 26 091
90 x 1"	72	21	135	90	4	M8X50		30	2 16 26 092
90 x 1 1/4"	76	24	135	90	4	M8X50		30	2 16 26 093
90 x 1 1/2"	76	24	135	90	4	M8X50		30	2 16 26 094
90 x 2"	80	27	135	90	4	M8X50		30	2 16 26 095
110 x 1/2"	80	17	168	99	4	M8X50		19	2 16 26 110
110 x 3/4"	80	19	168	99	4	M8X50		19	2 16 26 111
110 x 1"	84	20	168	99	4	M8X50		19	2 16 26 112
110 x 1 1/4"	86	23	168	99	4	M8X50		19	2 16 26 113
110 x 1 1/2"	86	23	168	99	4	M8X50	19	2 16 26 114	
110 x 2"	90	27	168	99	4	M8X50	19	2 16 26 115	
125 x 1/2"	108	25	190	106	6	M8X60	12	2 16 26 125	
125 x 3/4"	108	26	190	106	6	M8X60	12	2 16 26 126	
125 x 1"	109	26	190	106	6	M8X60	12	2 16 26 127	
125 x 1 1/4"	109	25	190	106	6	M8X60	12	2 16 26 128	
125 x 1 1/2"	113	28	190	106	6	M8X60	12	2 16 26 129	
125 x 2"	113	30	190	106	6	M8X60	12	2 16 26 130	
125 x 3"	125	40	190	106	6	M8X60	12	2 16 26 131	
160 x 3/4"	108	19	215	175	6	M8X60	13	2 16 26 161	
160 x 1"	110	21	215	175	6	M8X60	13	2 16 26 162	
160 x 1 1/4"	113	24	215	175	6	M8X60	13	2 16 26 163	
160 x 1 1/2"	115	26	215	175	6	M8X60	13	2 16 26 164	
160 x 2"	117	30	215	175	6	M8X60	10	2 16 26 165	
160 x 2 1/2"	125	32	215	175	6	M8X60	9	2 16 26 166	
160 x 3"	134	35	215	175	6	M8X60	9	2 16 26 167	
160 x 4"	135	40	215	175	6	M8X60	11	2 16 26 168	
200 x 3/4"	128	23	262	175	6	M10X100	6	11	2 16 26 201
200 x 1"	130	23	262	175	6	M10X100		11	2 16 26 202
200 x 1 1/4"	133	23	262	175	6	M10X100		11	2 16 26 203
200 x 1 1/2"	133	23	262	175	6	M10X100		11	2 16 26 204
200 x 2"	135	30	262	175	6	M10X100		11	2 16 26 205
200 x 2 1/2"	150	32	262	175	6	M10X100		9	2 16 26 206
200 x 3"	152	35	262	175	6	M10X100		8	2 16 26 207
200 x 4"	155	42	262	175	6	M10X100		8	2 16 26 208

AENOR



DN20-63



**COLLARÍN DE TOMA REFORZADO PN16**

Con anillo de refuerzo en acero inox  
Fig. 1031

Diámetros (mm/in)	Dimensiones (mm)					PN	ud/caja	Código
	L (mm)	H (mm)	E (mm)	F (mm)	n (mm)			
20 x 1/2"	45	25	80	54	2	16	30	2 16 16 020
25 x 1/2"	37	19	80	54	2		30	2 16 16 025
25 x 3/4"	43	22	80	54	2		30	2 16 16 026
32 x 1/2"	52	24	80	64	4		90	2 16 16 032
32 x 3/4"	46	18	80	64	4		90	2 16 16 033
40 x 1/2"	51	17	87	74	4		65	2 16 16 040
40 x 3/4"	53	20	87	74	4		65	2 16 16 041
40 x 1"	60	21	87	74	4		65	2 16 16 042
50 x 1/2"	65	24	102	78	4		45	2 16 16 050
50 x 3/4"	66	26	102	78	4		45	2 16 16 051
50 x 1"	65	24	102	78	4		45	2 16 16 052
63 x 1/2"	70	24	116	88	4		30	2 16 16 063
63 x 3/4"	86	23	116	88	4		30	2 16 16 064
63 x 1"	58	20	116	88	4		30	2 16 16 065
63 x 1 1/4"	70	26	116	88	4		30	2 16 16 066
63 x 1 1/2"	63	28	116	88	4		30	2 16 16 067
75 x 1/2"	81	25	130	88	4		25	2 16 16 075
75 x 3/4"	81	26	130	88	4		25	2 16 16 076
75 x 1"	80	26	130	88	4		25	2 16 16 077
75 x 1 1/4"	81	26	130	88	4		25	2 16 16 078
75 x 1 1/2"	80	26	130	88	4		25	2 16 16 079
75 x 2"	84	30	130	88	4		25	2 16 16 080
90 x 1/2"	90	25	150	88	4		20	2 16 16 090
90 x 3/4"	90	27	150	88	4		20	2 16 16 091
90 x 1"	90	27	150	88	4		20	2 16 16 092
90 x 1 1/4"	90	24	150	88	4		20	2 16 16 093
90 x 1 1/2"	90	30	150	88	4		20	2 16 16 094
90 x 2"	90	28	150	88	4		20	2 16 16 095
110 x 1/2"	100	24	175	107	6		15	2 16 16 110
110 x 3/4"	100	27	175	107	6		15	2 16 16 111
110 x 1"	100	25	175	107	6		15	2 16 16 112
110 x 1 1/4"	100	26	175	107	6		15	2 16 16 113
110 x 1 1/2"	105	30	175	107	6	15	2 16 16 114	
110 x 2"	105	30	175	107	6	15	2 16 16 115	

Color azul